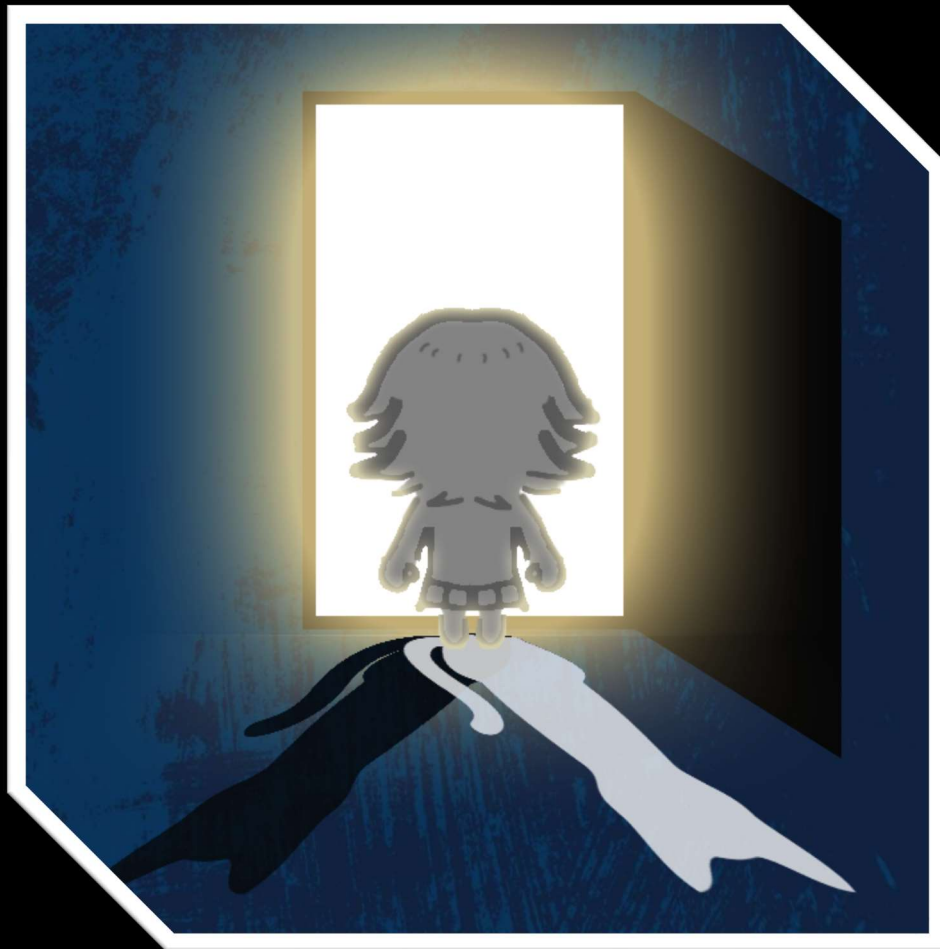


Tanjoubi 2kki

Official Guide Ver 1.1



Controls

[Z] Confirm

[X] Menu / Cancel

[Shift] Dash

[1-6] Change Forms

[9] Equip Revolver

[0] Reset Effects

[=] Open Gacha Banner

[~] Open Options Menu

[Spacebar] Toggle Speedrun Mode

Mobile

[Tap with two fingers] - Cancel/Backspace

Stats

ATTACK (ATK) - *Affects physical damage output*

DEFENSE (DEF) - *Affects physical damage mitigation*

MIND (MND) - *Affects emotional damage output*

RESISTANCE (RES) - *Affects emotional damage mitigation*

SPEED (SPD) - *Affects turn order*

LUCK (LUK) - *Affects critical rate and critical damage*

Ailments

VIRUS - *Depletes HP every turn. Can infect other units by physical attacks.*

VERTIGO - *Lowers accuracy by half.*

DIABETES - *Heavily reduces healing amount received.*

BIPOLAR - *Unable to use skills.*

General Tips

-Holding [Z] fast forwards cutscenes and other events

-To speed up walk speed, head to Options menu [~] and set Always Dash to ON

-In battle, you can hover your mouse over a character to view their current statuses and ailments.

-Enemy difficulty can be increased by

Adjusting the Nexus Booster but be cautious when doing so, try to increase it a few levels at a time. The booster does not affect the amount of battle rewards.

How to Unlock Skills

Teen

Counter Crossfire

Shoot the Revolver 16 times

Buckshot Bullets

Get a 6 when rolling a die with the dealer.

Dead4Center

Defeat a Zombie with Teen Chizuka.

Gerry's Grenade

Detonate the bomb in the abandoned store's basement and escape successfully.

Tanjoubi Spike (Burst)

Summon the Volleyball and bounce it 16 times as Teen Chizuka.

Fetus

Neurotransmitt

Finish a psychiatric evaluation.

Miscarriage

Defeat Innocent Baby with Fetus Chizuka.

Abortion (Burst)

End a battle with Fetus Chizuka KO'd.

Toddler

Fart Gas

Use the toilet as Toddler Chizuka.

Wonder Clap

Use the Snowflake as Toddler Chizuka.

Tantrum Wail

Use the Koropokko Leaf as Toddler Chizuka.

Baby Shower (Burst)

Defeat Nyan Cake. (Attract it with a teaser)

Child

Vocaloid Vanguard

Talk to Hatsune Miku as Child Chizuka.

MaiMai Melody

Use the washing machine as Child Chizuka.

Ominous Ovation

Play the Music Box in front of the Madotsuki statue.

Yukopi Flute

Enter the correct letters in the reflection pool piano.

Final Duet (Burst)

Defeat the Hell Widow. Only visible by using the Shades or N-Word Pass.

Adult

Call Manager

Use the phone and enter 1974.

Mommy

Approach 16 tiny animals as Adult Chizuka.

Hit & Run

Run over 16 people with the car.

Lonely Matrimony (Burst)

Use the phone and enter 1947.

Elder

Sanitize

Wash your hands as Elder Chizuka.

Sister Service

Talk to the Receptionist as Elder Chizuka

Shukkufukku

Pray the Japanese rosary correctly in front of the Shrine.

Surprise Supper (Burst)

Give food to the Homeless Man.

Item Locations

1. Volleyball - Default
2. Revolver - Default
3. Koropokko Leaf - Reflection Pool
4. Snowflake - Cat World
5. Kitty Teaser - Hunting Grounds
6. Music Box - Count's Castle

7. Dice - In front of the Dealer
8. Magnifying Glass - Near the Dealer
9. Tossing Coin - On the casino fountain
10. Phone - Near the Saleswoman
11. Timer - On the math world reception desk
12. Shades - Behind tree in Gacha world
13. Mysterious CD - Under the bed in Math world GF
14. USB - Above a shelf in Math world GF
15. N-Word Pass - Behind a pillar in the graveyard
16. Laptop - Math World 3F- My Computer

Field Locations

1. **Spirit Forest**
Default
2. **Shadow City**
Default
3. **Midnight Woods**
Horror World - Central Area
4. **Demonovania**
Gacha World - Central Area
5. **Solemn Sky**
Cat World - Central Area
6. **Clockwork Phantasmagoria**
Math World - GF
7. **Blood Room**
Math World - 3F
8. **Biblical Sea**
Reflection Pool
9. **Ritual Grounds**
Seibo Shrine
10. **Haunted Graveyard**
Graveyard
11. **Unhinged Void**
Defeat "Feline King"
12. **Terrorist Warfare**
Defeat "Crimson Enforcer"

13. **Organic Chasm**
Defeat "Count of Devouring"
14. **Algorithmic Matrix**
Defeat "Princess of Equations"
15. **Casinoverse**
Casino Slot Machine Jackpot Prize
(2% chance)
16. **Dimension XVI**
Complete the Normal Ending and wait
until post-end credits

Catfood Locations

- Cat World - Central Area
- Hunting Grounds
- Horror World - Central Area
- Abandoned Store
- Math World 3F - Recycle Bin

Secret Ending

--- . . . --- . / .- .- . / -.. / ...--

!Spoilers Ahead!

Kitty Trials

Use the Shades while in the Nexus and go through the black door.

Skill Rotations

Big DMG Combo- Start with Full Burst Gauges

→ Lonely Matrimony/Final Duet →

Energy Transfer x2 → Algorithmic Matrix →

Gerry's Grenade → Tanjoubi Spike

DoT Combo- Organic Chasm → Abortion /

Infection → Clockwork Phantasmagoria →

Sister Service

Buff Combo - I FeedYourKuya ->

Canon in D/Vocaloid Vanguard/MaiMai Melody
(Depending on the lacking stat Buffs)

Debuff Combo - Hit & Run ->

Call Manager/Bombastic Side Eye/You're Done!
(Depending on the lacking stat Debuffs)

**Heal to Damage Combo - Solemn Sky -> Sweet
Smile/Smoke Cannabis/Surprise
Supper/Burning Survivor -> Shukkufukku**

**Miscarriage Spam Combo - Surprise Supper ->
Algorithmic Matrix -> Miscarriage ->
Miscarriage -> Miscarriage -> Miscarriage**

**Mega Defense Combo - Start with Full Burst
Gauges -> Surprise Supper ->**

Energy Transfer x 2 -> Baby Shower ->
Sister Service -> Laptop Kotatsu -> Vocaloid
Vanguard -> Biblical Sea

Secret Boss Guide

Madotsuki is the only enemy in the game that is completely immune to field effects and can also nullify field effects from one of your party members. Keep this in mind when switching fields.

She can also remove her Debuffs and remove your Buffs, but only at a limited frequency.

Open with Baby Shower. The switch field to Biblical Sea/Midnight Woods for extra protection.

Be sure to keep a shield up at all times. Always prioritize your defenses before attacking.

Post-Game

How to Find the Hidden Bosses

"Mask of the Shadows"

1/64 chance of appearing in front of Biscuit's Castle.

OR guaranteed to appear in New Game+ upon using the N-Word Pass in the same area.

Strategy: Keep Shielding. Minimize healing.

"The Stairwell's Watcher"

Go down the stairs outside of NicoPheles' classroom on Math World 4F. Use the Laptop to noclip to it.

*Only appears in New Game+

Strategy: Keep Healing. Minimize shielding.

"The Blossomed Assassin"

Head to the shooting range in the Casino and use the Magnifying glass. Examine the smoke.

*Only appears in New Game+

Strategy: Use Physical DMG during Assault Mode, Use Emotional DMG during Recoil States

"Herrscher of the Night"

Use the Kitty Teaser on the group of cats in Cat World's Main Area.

*Only appears in New Game+

Strategy: Good Luck smh...